



Wireless Device Server

- ▶ Enables access to remote devices while minimizing costly cabling
- ▶ Provides network mobility for untethered communication
- ▶ Industry standard 802.11b/g wireless interface
- ▶ Transparent communications - no need to develop special software
- ▶ Two DB9 DTE serial ports supporting RS-232, RS-422 or RS-485 communication
- ▶ Compact size enables it to fit almost anywhere
- ▶ Secure wireless communication: WEP, WPA, TKIP
- ▶ 256-bit AES – end-to-end encryption
- ▶ Ethernet or wireless communication

Wirelessly Connect, Monitor, Manage and Control Devices Over a Network or the Internet

WiBox® dual-port Device Servers enable you to connect equipment to 802.11b/g wireless networks via serial or Ethernet, quickly and easily. By merging wireless communications and Lantronix Device Server technology, WiBox simplifies connectivity to devices in applications where mobility is required or cabling is impractical.

Lantronix's innovative approach to network-enabling devices is transparent to your attached devices and software. You won't need to change the way you work, and there's no need to develop special software to take advantage of wireless networking capabilities. The WiBox simply becomes a conduit between you and your device over your network or the Internet.

The flexibility and power of WiBox offers a huge cost-saving potential for a variety of commercial applications. Serial RS-232/422/485 flexibility, Advanced security, robust data handling capabilities and high serial speeds are all built in. Using a method called serial tunneling, the WiBox encapsulates serial data into packets and transports it over 802.11b/g wireless networks. By connecting two WiBox units via a network, virtual serial connections can be extended across your facility or around the world.

The Com Port Redirector™ software included with your WiBox simplifies your integration process by extending the functionality of your COM port-based Windows® applications. With virtual COM ports mapped to remote Device Servers on the network, you can replace direct serial connections.

To enable access to a local network or the Internet, the WiBox integrates a fully developed TCP/IP network stack and OS. It even includes a built-in web server, which can be used for configuration or to display operating and troubleshooting information on the attached links to online support.

The DeviceInstaller™ configuration software that's included simplifies installation and setup. WiBox can be set up locally through its serial port, or remotely over a network using DeviceInstaller Telnet or a web browser. Flash memory provides maintenance-free, non-volatile storage of web pages, and allows future system software upgrades.

In modem emulation mode, WiBox is used to replace dial-up modems. The unit accepts modem AT commands on the serial port, then establishes a network connection to the end device, leveraging wireless mobility and bandwidth to eliminate dedicated modems and phone lines.

If you're looking for a transparent, cost-effective and scalable means to network-enable your serial devices, look no further than WiBox from Lantronix.





Features

Serial Interface

Serial Port 1: RS-232
 Serial Port 2: RS-232/422/485 software selectable
 Data Rates: 300 to 921,600 bps
 Characters: 7 or 8 data bits
 Parity: Odd, even, none
 Stop Bits: 1 or 2
 Control Signals: RTS, CTS, DSR, DTR, DCD
 Flow Control: XON/XOFF, RTS/CTS
 ESD Protection: 4kv direct per port
 Data Encryption: 128-256 Bit Rijndael AES Encryption,
 NIST AES FIPS-197 CERT#120

Network Interface

WBX2100E - 802.11b/g
 Connector: WBX2100E - Antenna (RP-SMA)
 Standards: WPA, WEP, ARP, UDP/IP, TCP/IP, ICMP, SNMP, AutoIP, DHCP,
 TFTP, Telnet and HTTP
 1 RJ45
 10/100 Ethernet

Indicators (LED)

Power
 Ethernet Link
 Wireless Link
 Serial 1
 Serial 2

Processor

CPU: DSTni-EX (enhanced 80186, 88 MHz)
 Memory: 256 Kbytes SRAM, 512 Kbytes flash

Management

Lantronix DeviceInstaller GUI, Serial login, SNMP, Telnet login, HTTP
 Security: WEP, WPA, TKIP

Power

Input: 9-30 VDC
 Consumption: 2 W max.
 AC adapter included (see ordering information below)

Environmental

Operating temperature range: -40° to 70°C
 Operating humidity: 0 to 95%, non-condensing
 Storage temperature range: -40° to 85°C

Device Packaging

Material: metal case with flange mount
 Dimensions (LxWxH): 94 x 72 x 23 mm (3.7 x 2.8 x .9 in)
 Weight: 0.4 kg (0.9 lbs)

Agency Approvals

FCC-B, C/UL, CSA, CE, TUV, CTick, Japanese Radio Certification (Type
 Certification of Specified Radio Equipment)

Warranty

2-year limited warranty

Shipping Dimensions

Dimensions (LxWxH): 242 x 191 x 115 mm (9.5 x 7.5 x 4.5 in.)
 Weight: 1.5 kg (3.0 lbs.)

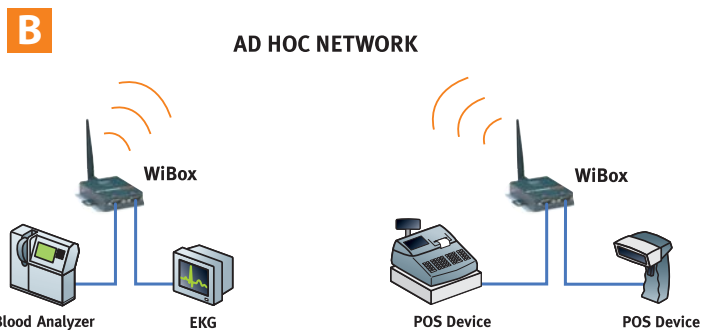
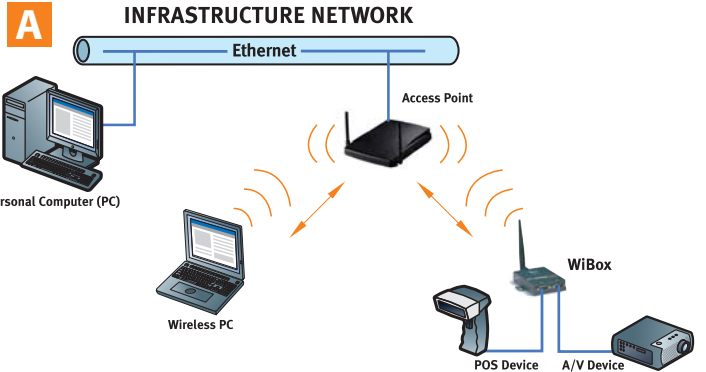
Included Software

Windows® 98/ME/NT/2000/XP-based configuration software, Com Port
 Redirector software, related utilities

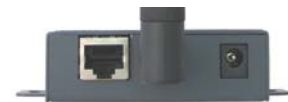
Wireless Device Server:

2 DB9 DTE serial ports, 802.11b/g, diagnostic LEDs, AC power adapter,
 CD-ROM with configuration tools and documentation, printed
 Quick Start Guide

Example Configurations



WiBox2100E Back Panel



WiBox2100E Front Panel



Ordering Information

Part Number	Description
WBX2100EG1-01	WBX2100E 802.11b/g with 10/100 Ethernet, 115Vac, 50/60 HZ power adapter
WBX2100EG2-01	WBX2100E 802.11b/g with 10/100 Ethernet, 100-240Vac, 50/60 HZ International power adapter
WBX2100EG0-01	WBX2100E 802.11b/g with 10/100 Ethernet, no power supply
WBX2100EGB-01	WBX2100E 802.11b/g with 10/100 Ethernet, Board only
ACDIN2001-01	DIN-rail mount
500-164	DB9F to DB9F null modem serial cable

